

89FEP-1073

Black Freestanding Inflator



The FEP model is purpose-built for service and gas stations, delivering safe, accurate, and reliable tyre inflation while enhancing your site's image. The cast baseplate and extruded aluminium body with high quality powder coat finish makes it ideal for any service station forecourt.

Features include selectable PSI/kPa units, a 'Flat Tyre Only' mode, high-quality piezo switches, and a ceramic pressure sensor for long-lasting performance.



Features



Designed for Forecourts

Purpose made freestanding unit with cast baseplate & extruded aluminium body.



Safe & Accurate

Supplied with 10 metre air hose and clip on air chuck ensuring safe and accurate tyre pressure.



Easy Install

Easy to install, the unit connects seamlessly to any on-site external compressor.



Reliable & User Friendly

High reliability (vandal resistant) piezo switches. For a user friendly experience.



Multiple Colour Options

Colour, branding and decal options available, to enhance corporate image.

Optional Item



Light Kit

Top plate LED visual display

This light is designed for night use, clearly indicating when a tyre has completed its cycle. The standard LED colour is blue, chosen for optimal visibility in low light conditions.

Technical Data

Black Freestanding Inflator



Specifications

Construction	Extruded Aluminium Enclosure (IP 46)
Power	220 ~ 240VAC (Optional 12VDC)
Dimensions	320W x 1400H x 320D mm
Measurement	psi kPa
Range	5 ~ 60 psi 35 ~ 415 kPa (145 psi option on request)
Accuracy	± 0.5% Full Scale

Included Parts

	22.0000	Hose Coupling Cover
	61.0008	Hose Assy Standard Black 10m
	49.7801	Warning Decal
	94.0101	Tap Assembly Push Button Chrome 1/2" BSP
	75.6095	Vinyl Decal, Caltex 'Water' (Special Font)

Warranty

Manufacturer's Warranty

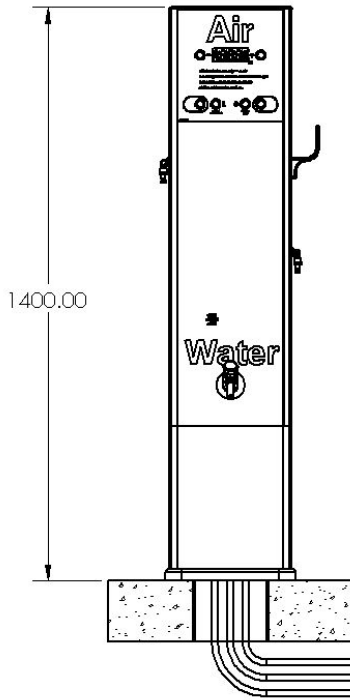
For warranty information please visit our website:
www.airteccorporation.com

Technical Data

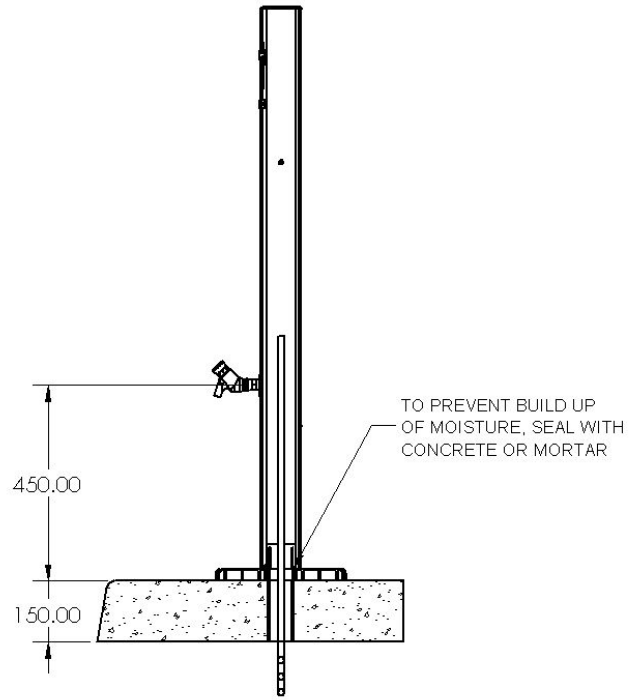
Black Freestanding Inflator



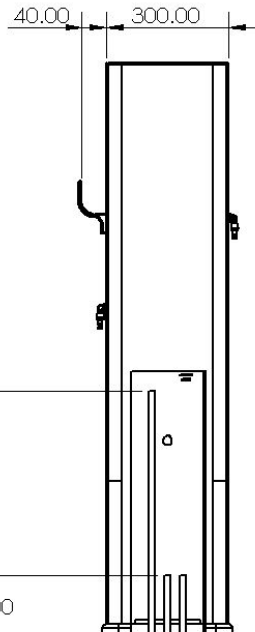
Installation Drawings



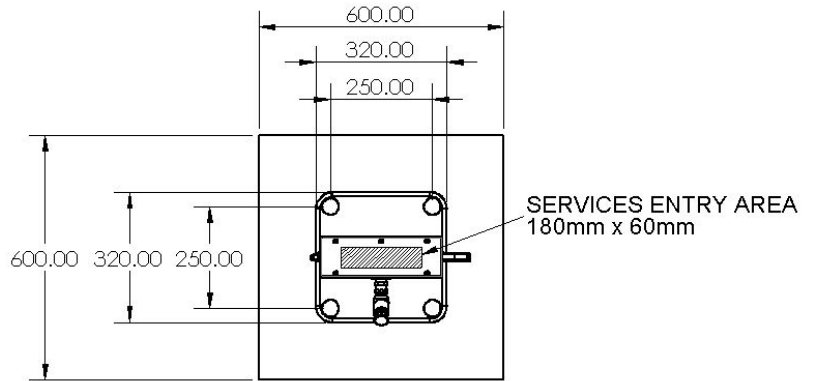
FRONT VIEW



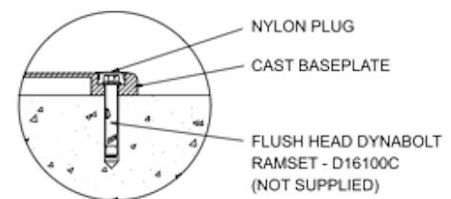
RIGHT-SIDE VIEW



BACK VIEW



TOP VIEW



FASTENING DETAILS

Power: 240V SWA
or 20mm conduct
Air: 12.7mm copper
Water: 12.7mm copper